

Ardiden Limited



ARDIDEN



Customer Story

CSA Global was commissioned by Ardiden Limited to assess graphite mineralisation at the Manitowadge project and make recommendations on further exploration.



Diamond drilling at the Manitowadge graphite project

Snap Shot

- Ardiden Limited acquired the early stage Manitowadge project centered on several known small surface graphite occurrences in early 2015
- Ardiden engaged CSA Global to undertake a site visit and review of exploration data leading to the discovery of three new graphite occurrences

About Ardiden

Ardiden is an Australian mineral exploration company seeking to generate shareholder wealth by identifying, acquiring and developing mineral projects in any jurisdiction that possess the potential for cash flow and growth.

The Manitowadge graphite project is located in Ontario, Canada in an area with well established infrastructure and a history of mining (base metals, gold). Surface sampling and drilling of the original Thomas Lake Road occurrences has confirmed the presence and extent of graphite mineralisation there. Metallurgical test work indicates that the occurrence contains a high proportion (up to 80%) of high-value large and jumbo graphite flakes that is readily recovered using simple gravity and floatation methods, and amenable to further purification.

"A re-interpretation of geophysical data by CSA Global highlighted new exploration targets in the Manitowadge area and led to the discovery of three new graphite occurrences. One of these, Silver Star North, is not exposed at surface and is one of the most significant new discoveries made in Ontario in 2015."

James Thompson, Director, Ardiden Limited



Mining
Industry
Consultants

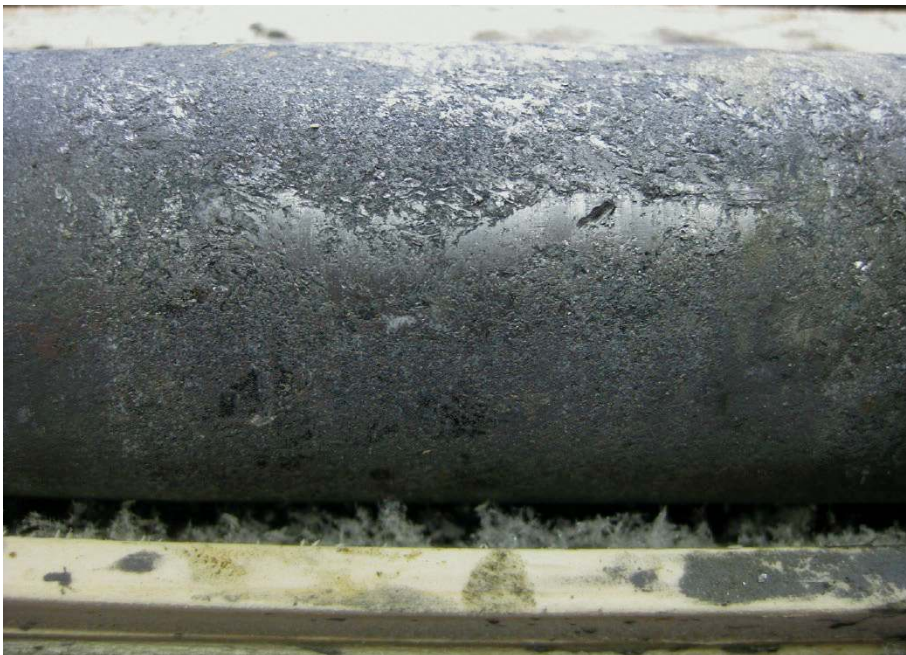
The Challenge

In addition to grade and tonnage, the grain size and quality of flake graphite have a significant impact on the economics of developing a graphite project. It became apparent at an early stage that, while the Thomas Lake Road occurrence contained high-value coarse flake graphite that is easily recovered, the grades and tonnages available were unlikely to be adequate for development based on this occurrence alone.

Solution

CSA Global recommended a review of the available geophysical data in light of recent drilling results at the Thomas Lake Road occurrence so that an association between electromagnetic conductivity and graphite grade and/or width could be established.

This review identified a number of high priority geophysical targets on existing Ardiden claims and on open ground. Ardiden staked the targets on open ground and undertook surface prospecting that led to the discovery of new graphite occurrences at Silver Star and Silver Birch. A late season diamond drilling program was then undertaken in 2015 to test these new occurrences, as well as a geophysical target overlain by glacial deposits at Silver Star North.



Coarse flake graphite in drill core from the Silver Star North discovery.

The Results

CSA Global has provided high-level technical advice to Ardiden on the Manitowadge graphite project beginning in late 2014 when the project was under due diligence. This involved oversight of diamond drill testing of known occurrences, using this information to understand the geophysical response of graphite occurrences in the region, and then using this knowledge to generate new exploration targets away from the known occurrences.

Ardiden Limited's Approach

- Engaged CSA Global to review existing exploration data and recommend strategies for further development of the project, including diamond drilling

Results

- CSA Global confirmed surface grades at the original prospect and designed a diamond drilling program to successfully test known graphite mineralisation
- Existing geophysical data was integrated with the new drilling data from the known occurrences to identify similar geophysical targets in adjacent areas
- Surface prospecting and drilling of three of these targets resulted in the discovery of new graphite occurrences, one of which (Silver Star North) has grades and widths of graphite mineralisation in excess of those at the original prospect